



THE NEW ISUZU RODEO 4X2 SINGLE CAB. THE NEW NUMBER ONE SINGLE.

**ISUZU
RODEO**



CUT BACK. MOVE FORWARD.

When the going gets rough, it's tempting to hang on to your worn-out workhorse 'til things get better. But running it into the ground could be a false economy.

Think about everything it takes to keep the show on the road – the rising fuel bills from that old engine... the ever-increasing service and repair costs... not to mention the possibility of crippling road tax fees if you're belting out too much CO₂.

Much better to cut your losses and invest in the long haul, with the new Isuzu Rodeo 4x2 single cab.

It's a no-frills, no-nonsense, brilliant cargo carrier that's best in class where it really counts. Earning its keep and adding to your bottom line, without being spartan or bereft of the benefits you need to make life on the job that more pleasant. Amazing value for money, it's not just a snip – it's a steal. So now's the perfect time to start making it work for you.

BUILT AROUND WORLD-BEATING TECHNOLOGY.

Isuzu is not only one of Japan's biggest truck makers, but also the world's largest commercial diesel engine maker, producing 1,000,000 diesel engines and over 250,000 pick-ups a year for over 140 countries.

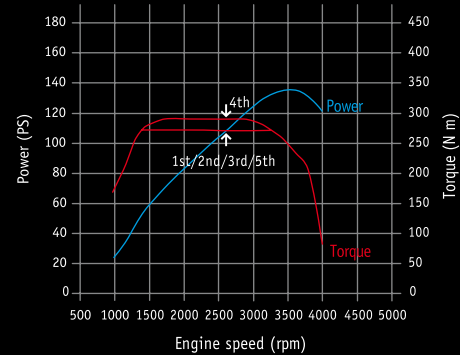
That's the strength and reputation built into the 4x2 single cab. It's focused on an all-new 2.5 Commonrail diesel engine purpose-built for the Rodeo. Perfectly matched and balanced to the job in hand, it gives the best possible response, torque and fuel efficiency.

If you're number-crunching, that means 136PS @ 3600 rpm, with a stump-pulling 294 Nm of torque @ 1800-3200 rpm. So there's no doubt it's got the power to get the work done.

Better yet, Rodeo delivers excellent fuel economy and emissions performance – up to 38.2 mpg on the combined cycle thanks to 2WD, and down to 196 g/km of CO₂ to keep your carbon footprint smaller.

All of which means you save, all round.

2.5 Commonrail Diesel Engine



CLASS-LEADING PULLING POWER, WITH EXTRA PERKS.

Whatever you're hauling, Rodeo 4x2 single cab has all the profit-making capacity you could want. First off, there's a best-in-class towing capacity of 2,500 kg. Then, there's the substantial payload of up to 1,235 kg – not forgetting the generous 195 mm ground clearance that helps you get what you're carrying where you want it to go.

The going's easier, too, with power steering and a slick-shifting 5-speed box. For safety's sake, there's ABS with EBD for precise braking under all conditions, as well as driver and passenger's airbag as standard.

But the 'more bang for your buck' theme goes well beyond features like that. Where everything else talks about economising, Rodeo adds in the creature comforts that help to de-stress day-to-day driving. So, you'll find velour seat trim, height adjustable steering wheel and headrests, electric windows and central locking. Not to mention the convenience of a CD player with iPod* connectivity. All of which makes a workhorse a much more welcoming proposition.



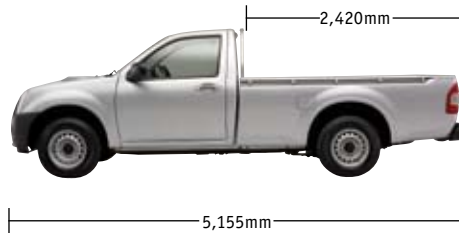
Wading depth 400mm @ 15km/h



Ground clearance 195mm



Load dimensions:
Length 2,280mm
Width 1,520mm
Height 450mm (At highest point)



2,420mm

5,155mm



Track:

Front 1,460mm

Rear 1,460mm

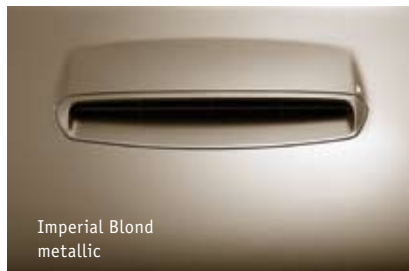


1,635mm

1,720mm

(width excluding wing mirrors)

TECHNICAL SPECIFICATION/COLOURS/UPHOLSTERY.



Model

Rodeo 4x2 Single Cab

Exterior colours	Highland Green mica	Tornado Red mica	Imperial Blond metallic	Black Sapphire mica	Sterling Silver metallic	Zenith Blue mica	Interior Colour	Seat material
Alpine White							Anthracite with Silver trim	Moquette fabric
								Leather

▲ Standard
 ■ Option at extra cost, please consult your dealer.
 — Not available

FEATURES.

Exterior

Tarpaulin hooks x 12	👍
Trim – black front bumper	👍
Trim – chrome finish door handles with body coloured bezel	👍
Trim – grey finish radiator grille	👍
Trim – rear step bumper	👍
Trim – body coloured tailgate release	👍
Front wipers – two speed with intermittent	👍
Lights – rear fog lamp	👍
Tow hook – front	👍
Trailer wiring – 13 lead	👍
Wheels – 15" steel	👍
Wheels – full size spare and tyre	👍

Comfort/convenience

Lights – adjustable dashboard illumination	👍
Power steering	👍

Interior

Cigarette lighter	👍
Fuel lid – interior release	👍
Illumination – interior light	👍
Trim – cloth seats	👍
Trim – roof mounted grab handles x 2	👍
Trim – twin front sun visors	👍
Lights – electric headlamp levelling	👍
Storage – centre console compartment	👍
Storage – front door cup holders	👍
Storage – front door pockets	👍
Storage – front ashtray	👍
Storage – in-dash pocket	👍
Storage – lockable glove box	👍
Storage – twin front cup holders	👍
Windows – tinted glass, electric	👍

Audio visual/navigation

Audio – two speakers	👍
Audio – Pioneer DEH-3900MP: single disc CD player with MP3/WMA playback. FM/AM stereo radio (RDS). Auxiliary audio input jack	👍
Audio – Clarion WXZ468rpm: six disc in-dash CD	■
Audio – Pioneer AVIC-D3: colour touch-screen SatNav	■
Audio – roof mounted telescopic aerial	👍

Safety

Air bags – driver and front passenger	👍
Brakes – ABS anti-lock with EBD	👍
Seat belts – driver warning indicator	👍
Seat belts – with pre-tensioners	👍
Lights – high-mounted stop lamp	👍
Under chassis protection – fuel tank fire protector	👍

Security

Alarm	👍
Engine immobiliser	👍
Ignition key reminder warning	👍
Tamper-proof ECU	👍
Windows – electric window override switch	👍
Key operated central locking	👍

SPECIFICATIONS.

Engine

Bore (mm)	95.4
Stroke (mm)	87.4
Compression	18.3±0.6
Engine capacity (cm ³)	2499
Net power	136 PS @ 3600 rpm
Torque	294 Nm @ 1800-3200 rpm

Performance, economy & emissions

Fuel consumption mpg (l/100 km)	
Urban	30.4 (9.3)
Extra urban	44.8 (6.3)
Combined	38.2 (7.4)
CO ₂ emissions g/km	196
0-62 mph seconds	10.9
Max. Veh. Spd. mph (km/h)	108 (175)

Speed per 1000 rpm (mph)

1	5.2
2	9.0
3	14.6
4	20.8
5	27.9

Transmissions

Gear ratios	
1	4.008
2	2.301
3	1.427
4	1.000
5	0.745
Reverse	3.651
Final drive	3.727

Weights & measurements

Length (mm)	5155
Width (mm)	1720
Height (mm)	1635
Front overhang (mm)	775
Rear overhang (mm)	1330
Wheelbase (mm)	3050
Ground clearance (mm)	195
Wading depth	400mm @ 15 km/h (9 mph)
Curb weight (kg)	1615
Payload (kg)	1235
Gross vehicle weight (kg)	2850
Trailer weight braked (kg)	2500
Trailer weight unbraked (kg)	750
Nose weight (kg)	100
GTW (kg) (Gross Train Weight = GVW + max trailer weight).	5350
Fuel tank capacity litres (gal.)	76 (16.7)
Track front (mm)	1460
Track rear (mm)	1460
Min. turning circle (m) dia. (Radius) kerb to kerb	11.8 (5.9)

Weights & measurements

Tyres	215/70R15
Wheels	15 x 6.5J Steel

PEACE OF MIND FOR TROUBLED TIMES.

Rugged build and cast-iron reliability are part of the Isuzu legend. So you can take comfort from the fact that your investment in a Rodeo pick-up will be paying for its keep for years to come.

Apart from the fuel economy, running costs are driven down with 12,000 mile service intervals. Extra underbody and box section rust proofing mean we can confidently offer a 6 year anti-corrosion warranty. And of course, there's a 3 year/60,000 mile warranty, along with 3 years' recovery and assistance cover.

In the long run, it makes perfect business sense for your bottom line. Which is why you should be talking finance deals with your nearest Isuzu dealer right now? With a Rodeo 4x2 single cab on the team, things can only get better.

- 👉 It's got it
- Dealer Fit Option
- NCO No Cost Option
- Not available





CALL 08708 502504 OR VISIT ISUZU.CO.UK

Technical data and equipment detailed in this brochure are based on the latest information at the time of printing. Isuzu (UK) Limited reserve the right to make changes at any time without notice to colours, materials, design, equipment and specifications, and to discontinue models. Customers are advised to consult their Authorised Isuzu Dealer on the precise details of vehicles available for sale. Due to supply constraints, certain models and specifications may be subject to special order. Models specified are strictly subject to availability. Please consult your Isuzu Dealer for details. Owing to the limitations of printing processes, colours reproduced in the illustrations in this brochure may not exactly match the product colours. The contents of this brochure are the copyright of Isuzu (UK) Ltd and may not be copied or displayed for commercial purposes without the express permission of Isuzu (UK) Ltd. © Isuzu (UK) Ltd 2008. All new vehicles marketed by Isuzu (UK) Limited are covered by a 3 Year/60,000 mile warranty (whichever comes first). Bodywork is covered by a 6 Year anti-corrosion warranty. Added reassurance is provided by a comprehensive 3 year recovery and assistance programme valid both in the UK and Europe. Please consult your Isuzu dealer for full details. Part No IB435.